



# INSTALLATION OF VAN RACKING IN ELECTRIC AND HYBRID VEHICLES

## 3 Crash tested methods (NS286)

This manual is for the use of System Edström Dealer Partners that have proper knowledge of, for example, the importance of correctly placed angle brackets in the sides of the van.

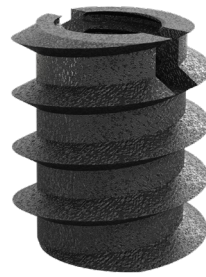
We are confident in your ability to determine if a wooden floor is of good quality.

## Option 1: Insert Nut

**If the vehicle already has a wooden floor (min 9mm thick) installed and you do not want to exchange it for another floor, you may choose this option. How does it work?**

Place the preassembled racking inside the vehicle and mark the installation points on the floor. Move the racking to the side, then drill holes with a diameter of 10mm (preferably countersunk) for the Insert Nuts, then screw them into the holes. For the best mounting results, use a screwdriver and only press vertically against the hole. Done!

Now it's time to move the racking back to its place and use our screws to mount it to the Insert Nuts. We strongly recommend you use threadlock fluid (Loctite 243 el. 2400).



**Insert Nut**  
Part No. 7180 (9mm floor)  
Part No. 7181 (12mm floor)

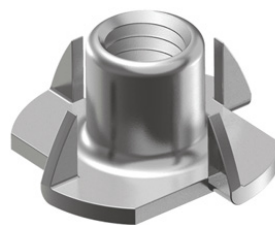


## Option 2: T-nut

**If you are installing a new floor, T-nuts should be your installation option. How does it work?**

Place the floor inside the vehicle, then place the pre-assembled racking on top of the floor, exactly where you wish to have it installed. Mark the installation points on the floor. Remove the racking and the floor from the vehicle, drill 7.5mm-diameter holes on your marks, then install the T-nuts from underneath the floor. Mount the floor to the vehicle, then the racking to the floor's T-nuts using our screws.

We strongly recommend you use threadlock fluid is highly advised (Loctite 243 el. 2400).



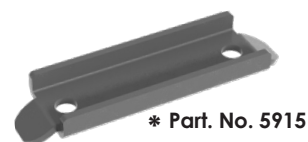
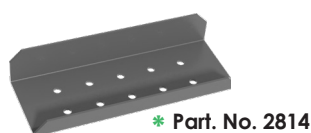
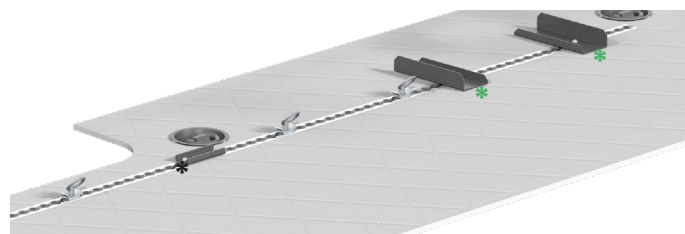
**T-Nut**  
Part No. 7172

## Option 3: Floor with integrated Airline rails

**Choose to install your racking on a floor with Arline rails, and you have the possibility to use the Airline rail's fixation points to secure your other goods in the vehicle. How does it work?**

Place the floor inside the vehicle, and the racking on top of the floor, exactly where you wish to have it installed. If all the installation points end up where it is possible to install the entire racking using the Airline Rail fixation points, you can use our Airline Rail-adapters (5911, 5915 & 2814.)

If some of the installation point do not match up to the Airline Rail's fixation points, you need to mark these installations points and use one of the other installation options above; Insert Nut or T-nut.



## How should the floor be mounted in the vehicle?

In electric and hybrid vehicles, you must not drill into the vehicle's chassis and floor; batteries and wiring systems make almost the entire floor area a no-drill zone. Drilling here can cause severe accidents. We strongly recommend using one of the three crash-tested and drill-free installation options above to securely install the racking in the vehicle.

Most van models are equipped with lashing points placed on the floor. If this is the case, the floor also comes with lashing point washers that are used to mount the wooden floor.

For van models where the lashing points are placed on the side of the van, we recommend gluing the floor instead. In these cases, it is crucial that you follow the glue manufacturer's user manual correctly.

All three mounting options require good quality floors, such as birch plywood.

Use System Edström's high-grade, crash-tested, Insert Nuts and T-nuts.

SYSTEM  
EDSTRÖM

